

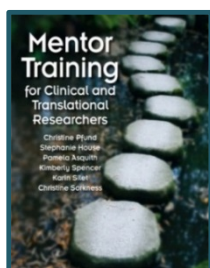
Mentorship Development Opportunity at UNMC

UW ICTR and the Great Plains IDeA-CTR Network is pleased to announce a professional development opportunity for faculty who are **actively mentoring** or who are **interested in mentoring junior faculty** developing research careers. The 8 hour research mentoring seminar will be co-facilitated by Drs. Barta and Diggs-Andrews.

Monday, June 19th, 2017

Meeting room, time and agenda to follow

The seminar is based on the published curriculum, *Mentor Training for Clinical and Translational Researchers*, which has been successfully tested via a multi-site randomized controlled trial (RCT) led by UW-Madison, and is now being used as a framework for training across the **NIH National Research Mentoring Network (NRMN)**. The seminar uses a case-based approach to explore an intellectual framework for research mentoring, providing opportunities for reflection on mentoring skills and a forum to solve mentoring dilemmas and share strategies for success. Findings from the RCT include:



- **Trained mentors** reported significantly higher learning gains as compared to the control. They also reported they had implemented more changes in their mentoring practice.
- **88% of seminar participants** reported that the 8-hour seminar was a valuable use of their time and 90% said they would recommend it to a colleague.
- **Mentees of Trained Mentors** noted a greater number of positive changes in their mentoring relationship over the study period.

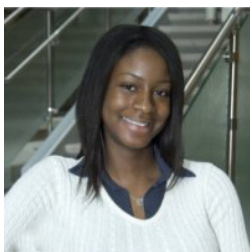
There is no cost for this event.

Register by June 12th by contacting Heather Braddock
at heather.braddock@unmc.edu

Enrollment is limited to 40 participants

Out of state attendees will be reimbursed for 1 night's lodging and mileage

Facilitators



Kelly Diggs-Andrews, PhD, is the founder and CEO of Diggs-Andrews Consulting, LLC, a consulting and media company who goals is to broaden accessibility to science careers through science outreach, diversity training, and professional development. Dr. Diggs-Andrews is a trained neuroscientist and cell biologist who earned her PhD in Biology and Biomedical Sciences from Washington University in St. Louis. She was also the recipient of the NIH-Ruth L. Kirschstein National Research Service Award, Chancellor's Diversity Graduate Fellowship, and a National Cancer Institute Postdoctoral Supplement. In her previous role, she served as the Education and Mentoring Fellow with the American Society for Microbiology (ASM) and spearheaded an NSF-funded program to develop ASM's mentoring capacity, to advance investigator-educator collaborations and interdisciplinary research, and to broaden participation of underrepresented individuals in science, technology, engineering, and math (STEM) fields. She is also a Master Facilitator with the National Research Mentoring Network (NRMN) and has organized and co-facilitated Research Mentor Training workshops for graduate trainees, postdoctoral fellows, and junior and senior faculty.



University of Wisconsin-Madison. Her position is centered on undergraduate research activities including advising students about various research opportunities on and off campus, developing 'research-based' labs for the undergraduate curriculum, implementing various research-skills related workshops, organizing poster sessions for undergrads, and working with employers to create internship opportunities for students. Dr. Barta teaches various courses related to undergraduate research such as 'Entering Mentoring' and 'Entering Research'. In addition, she is involved in the REU Chemistry and Chemical Engineering programs during the summers, has the opportunity to mentor a handful of undergrads every semester in her research lab, and is a Master Facilitator for NRMN where she helps to train other researchers how to effectively mentor.