



# GREAT PLAINS PRIMARY CARE PRACTICE-BASED RESEARCH NETWORK NEWSLETTER

January 2021 • Volume 3

## 2020 Dissemination & Implementation Science Workshop: Critical Elements to Writing a Successful NIH Application



A major goal of the GP IDeA-CTR Network is to increase the number of successful clinical and translational researchers working on innovative ways to reach medically underserved populations and improve the health of individuals living within our region. To achieve this goal, facilitating research on dissemination and implementation science – the study of how best to move research evidence into practice – is critical. Workshops such as these are meant to assist researchers in developing and using innovative tools and approaches, and leading CTR teams. Implementation science is the study of methods that influence the integration of evidence-based interventions into practice settings. Dissemination is the process of facilitating the adoption and reach of evidence-based interventions across clinical and community settings.

With the challenges of the COVID-19 pandemic, we have decided to make this year's workshop virtual and asynchronous. The theme for this year's workshop is the "Critical Elements to Writing a Successful NIH Application." We have dynamic and exciting presentations from three D&I researchers, Drs. Bryan Weiner, Alanna Rahm, and Ross Brownson, who have successfully secured National Institute of Health funding. In addition to their presentations about their NIH funded research, each speaker also engaged in a conversation with the Director of the IDeA-CTR Community Engagement and Outreach Core, Dr. Paul Estabrooks. These conversations focused on providing details and explanations about how they included the critical elements of a federal grant in their proposals – specific aims, significance, innovation, and approach.

Register [here](#) to access the modules from these D&I experts. The URL for the modules will be sent to you. For more information, visit the [D&I Workshop webpage](#).



## PROFESSIONAL DEVELOPMENT

The Great Plains Primary Care PBRN provides links to professional development opportunities, in the form of seminars and webinars, that enhance clinical expertise, reveal best care practices, promote clinical research, and deliver cutting-edge research findings. Continuing education credits are available for in-person and distance participation. For a complete list of professional development opportunities, visit [the PBRN Education and Seminars webpage](#).

## The Nebraska Healthcare Collaborative: Opportunities for Health Data Utility

Joy Doll, OTD, OTR/L, FNAP, the Chief Academic Program Officer for the Nebraska Healthcare Collaborative will be presenting on "Opportunities for Health Data Utility". The Nebraska Healthcare Collaborative is designed to bridge the gap between data science and healthcare in order to make systematic improvements across the state.

**Thursday, January 14<sup>th</sup>, 2020 | 12:00 PM-1:00 PM**

[Click here for the Zoom link](#)

Webinar ID: 4025522260    Webinar Password: 2260

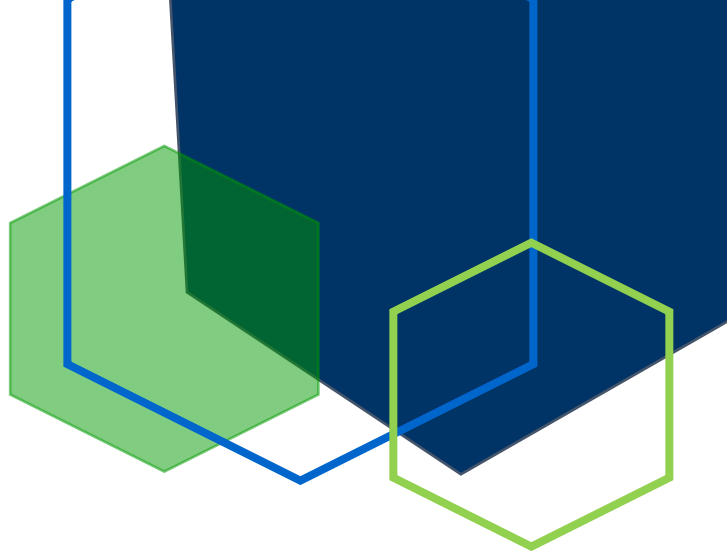
For more information, contact Heather Braddock ([heather.braddock@unmc.edu](mailto:heather.braddock@unmc.edu)).

# On-Demand Activities and Enduring Materials

The Center for Continuing Education at The University of Nebraska Medical Center has organized on-demand presentations that can be viewed asynchronously for continuing education credit, free of charge. Available activities cover the following topics:

- COVID-19: Learning As We Go
- 2020 Diabetes Update
- Opioid Use Disorders Training Modules
- Pathway to Cure
- Perinatal Substance Exposure: Opioid & Substance Use & CARA Federal Law Implementation
- Podium to Practice: Updates on Recent Advances in CAR T-Cell Therapy for the Treatment of Hematologic Malignancies
- The Intersection of Brain Injury and Behavioral Health Needs
- Virtual Challenging Case Clinic: B-Cell Lymphomas
- Virtual Challenging Case Clinic: Multiple Myeloma

New modules covering additional topics will be released in February. For more information and direct access to the modules, visit [the On-Demand Activities and Enduring Materials webpage](#).



UNMC CENTER FOR CONTINUING EDUCATION

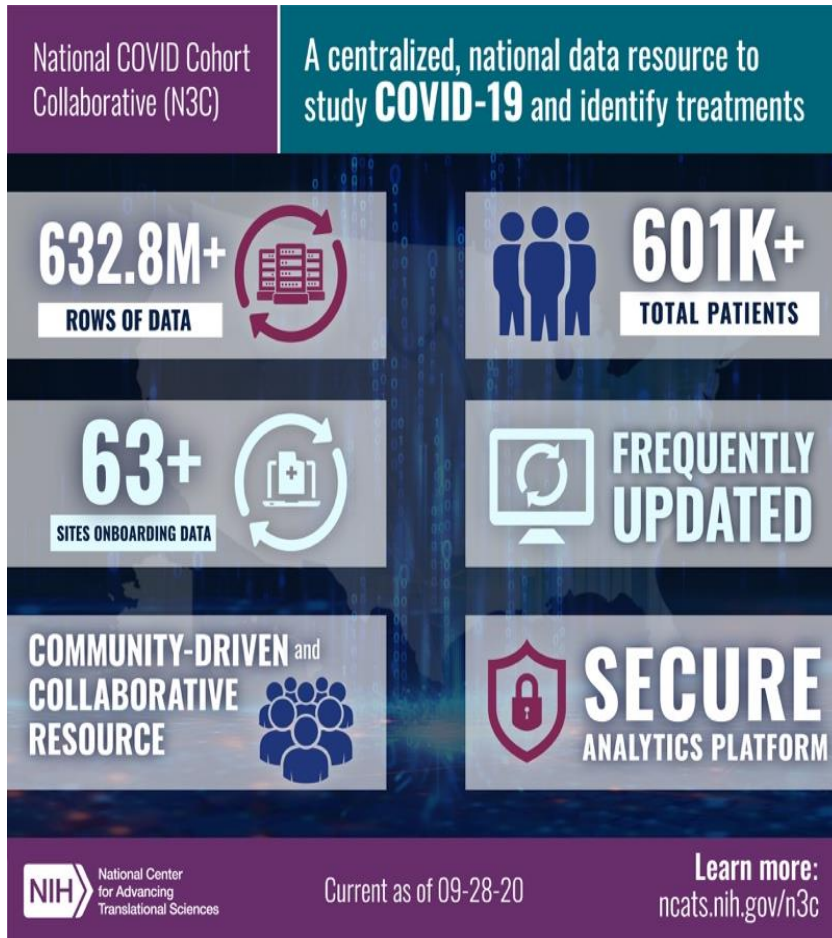
## On-Demand Activities and Enduring Materials



## RESEARCH

The following studies are recruiting participants. Please share these opportunities with your patients and healthcare community. A complete list of ongoing research can be found on [the PBRN Research webpage](#).

# COVID-19 Registry: Turning Clinical Data into Knowledge



The National Institutes of Health has launched a centralized, secure enclave to study a vast amount of COVID medical record data from around the country. The National COVID Cohort Collaborative (N3C) is a resource available to scientists to answer questions related to topics such as treatment protocols, disease progression and relationship of COVID to social determinates of health. The N3C harnesses the extensive resources of the National Center for Advancing Translational Sciences (NCATS), the Clinical and Translational Sciences Awards (CTSAs) program, the National Institute of General Medicine Sciences, the Institutional Development Awards for Clinical and Translational Research (IDeA-CTRs), and the National Center for Data to Health (CD2H).

For more information, contact Jerrod Anzalone ([alfred.anzalone@unmc.edu](mailto:alfred.anzalone@unmc.edu)).

## Great Plains Cognitive Network, “GP CogNET”



Symptoms of Alzheimer's disease may lag decades behind brain changes. We invite all adults 50 years of age and older to enroll in the Great Plains Cognitive Network, GP CogNET, a research registry linking community members to Alzheimer's disease and brain health-focused clinical research. Enroll online at <https://gp.cognet.unmc.edu>. For more information, contact [gp.cognet@unmc.edu](mailto:gp.cognet@unmc.edu). IRB #214-19-EP



# DISTANT CARE: Taking Charge of Stress & Mood in Heart Disease



Researchers in the College of Nursing at the University of Nebraska Medical Center are looking for rural men and women under age 65 with heart disease to take part in a study. This study will test a “tool” (an app + text messaging prompts) to self-manage stress and improve mood in people with ischemic heart disease. In Phase 1 of the study, we will gather information from rural residents about what they think of the app and ideas about text message prompts to be used

along with the app in phase 2. In Phase 2, study participants will use the tool over a 12-week period from the privacy of their own smartphone. People do not have to participate in both phases of the study. No travel is required, and participants will be compensated for their time. Eligible participants will have a diagnosis of ischemic heart disease, be under age 65, live in a rural area, speak and read English, and own a smartphone that can receive text messages. For more information, please visit [www.unmc.edu/nursing/research/researchpublications/distant-care-rural](http://www.unmc.edu/nursing/research/researchpublications/distant-care-rural) or contact Sydney Buckland, PhD, APRN at the UNMC College of Nursing by phone (402-559-4637) or by e-mail ([sydney.buckland@unmc.edu](mailto:sydney.buckland@unmc.edu)). IRB #524-20-EP

## UPCOMING EVENTS

### PBRN Board of Directors Meeting: January 4<sup>th</sup>, 2021

We are excited to host a virtual PBRN Board of Directors Meeting on January 4<sup>th</sup>, 2021 from 12:00 PM-1:00 PM CST. If you are interested in representing the PBRN as a board member, contact Emily Frankel at [emily.frankel@unmc.edu](mailto:emily.frankel@unmc.edu).

To ensure you are included on all PBRN correspondences, please complete the membership survey at <https://is.gd/joinPBRN>

Have information, news, or an event to include in the next newsletter? Contact Emily Frankel at [emily.frankel@unmc.edu](mailto:emily.frankel@unmc.edu)



The Great Plains IDeA-CTR is a collaborative effort between nine biomedical research institutes across the Great Plains.



To learn more about the Great Plains Primary Care PBRN, visit:

<https://gpctr.unmc.edu/ctr-resources/pbrn/>

The content of this newsletter is solely the responsibility of the Great Plains IDeA-Clinical & Translational Research and does not necessarily represent the official views of UNMC.



@GPIDeACTR