



G R E A T P L A I N S
IDeA | Clinical and
Translational Research

GREAT PLAINS PRIMARY CARE PRACTICE-BASED RESEARCH NETWORK

MAY 2022 | VOLUME NO.8

PBRN Welcomes New Board Member

Carrie McAdam-Marx, PhD, RPh, is a Professor in the Department of Pharmacy Practice and Science at the University of Nebraska Medical Center College of Pharmacy. She conducts health services research in collaboration with pharmacists and providers to demonstrate how team-based primary care with pharmacist involvement impacts both patient and population health outcomes. Dr. McAdam-Marx serves as a collaborator and mentor for primary care pharmacists and trainees incorporating research and robust program evaluation methods into their clinical practice. Her research as lead investigator or co-investigator/mentor has included studies demonstrating the value of remote monitoring on diabetes outcomes, the influence of substance use disorders on diabetes control, treatment outcomes associated with pharmacist-led hepatitis C treatment, and the impact of pharmacist-led diabetes management on diabetes quality of care measures.



Prior to her position at UNMC, Dr. McAdam-Marx was Associate Professor and Director, Pharmaceutical Evaluation and Policy Division at the University of Arkansas for Medical Sciences and Associate Professor at the University of Utah College of Pharmacy. While at Utah, Dr. McAdam-Marx was a member of University of Utah Primary Care Practice-Based Research Network (UU PBRN) Executive Committee. This remit of the Executive Committee was to set research priorities for large primary care research initiatives led by University of Utah faculty and advise individual researchers proposing to work with UU PBRN sites on smaller studies. Many of the latter consultations focused on ensuring the appropriate fit between the clinic site and proposed research and minimizing disruptions to clinical workflow that were not value-added.

Dr. McAdam-Marx has a pharmacy degree from the University of Kansas, a PhD in Health Policy from the University of Sciences Philadelphia, and an MS in Clinical Investigation from the University of Utah.



Professional Development

The Great Plains Primary Care PBRN provides links to professional development opportunities, in the form of seminars and webinars, that enhance clinical expertise, reveal best care practices, promote clinical research, and deliver cutting-edge research findings. Continuing education credits are available for in-person and distance participation.

Primary Care Education On-Demand Series

This free, on-demand series is designed to equip health care providers with up-to-date, evidence-based information and how best to approach clinical management following commonly encountered primary care issues.

Available modules include: Advancements in Advanced Heart Failure, Nasal Form and Function, Kidney Transplantation, Melanoma, Hip & Knee Arthritis, Updates on Prostate Screening, Benign Breast Disease, and Lower Back and Leg Pain.

Continuing education credit is available for participation.

Access the modules [here](#)!

Community Research Exchange

Monday, May 9th, 2022 | 7:30 AM-2:00 PM

Join the University of Delaware ACCEL Clinical and Translational Research Network as speakers discuss systematic approaches to incorporating community engagement across the translational spectrum.

Drs. Rhonda Kost and Jonathan Tobin will deliver the keynote presentation, "Building Full Spectrum Translational Research Teams of Laboratory Investigators, Practicing Clinicians, Patients and other Stakeholders."

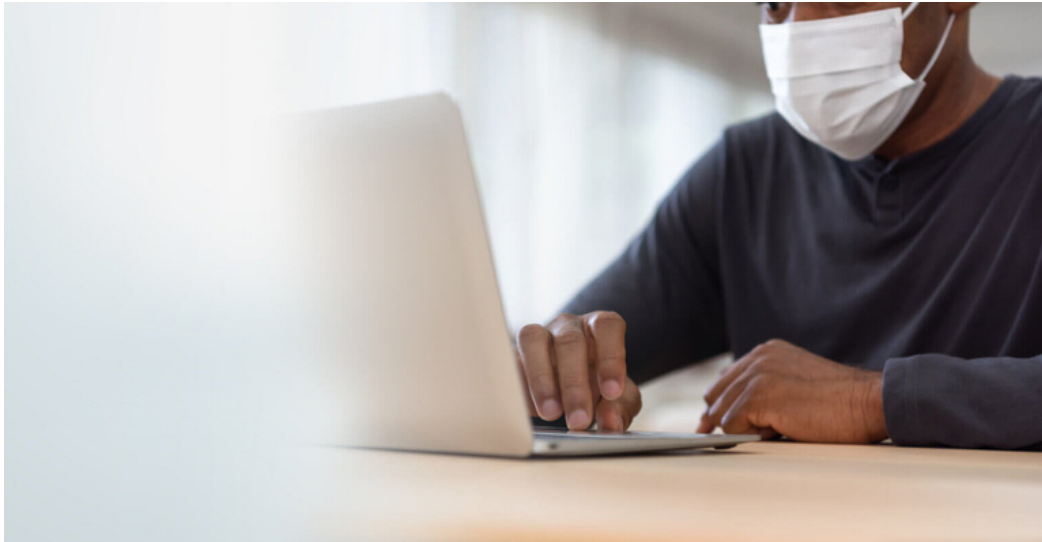
Register online [here](#)!



Scan the QR code for more professional development opportunities!

Research

Learn about upcoming, ongoing, and completed research impacting the region. Please share these opportunities and findings with your patients and healthcare community. A complete list of ongoing research can be found on the PBRN Research webpage.



ACTIV-6: Working together to help people with COVID 19 feel better faster

ACTIV-6, “The Randomized Trial to Evaluate Efficacy of Repurposed Medications,” is a nationwide double-blind study expected to enroll nearly 15,000 participants from across the United States through its website, <https://activ6study.org>, and call center, 833- 385-1880.

The study is part of the National Institutes of Health-funded Accelerating COVID-19 Therapeutic Interventions and Vaccines (ACTIV) led by the National Center for Advancing Translational Sciences. The Duke Clinical Research Institute serves as the study’s clinical coordinating center, partnering with Vanderbilt University Medical Center as the study’s data coordinating center. We encourage PBRN members to share this opportunity with your clinic and community. For more information, please contact Emily Frankel at emily.frankel@unmc.edu or 402-836-9283.



Great Plains Cognitive Network, “GP CogNET”

Symptoms of Alzheimer’s disease may lag decades behind brain changes. We invite all adults 19 years of age and older to enroll in the Great Plains Cognitive Network, GP CogNET, a research registry linking community members to Alzheimer’s disease and brain health-focused clinical research. Enroll online at <https://gp.cognet.unmc.edu>. For more information, contact gp.cognet@unmc.edu. IRB #214-19-EP

Scan the QR code for more research opportunities!





The Great Plains IDeA-CTR is a collaborative effort between nine biomedical research institutes across the Great Plains. The project described is supported by the National Institute of General Medical Sciences, U54 GM115458, which funds the Great Plains IDeA-CTR Network. The content is solely the responsibility of the authors and does not necessarily represent the official views of the NIH.



To learn more about the Great Plains Primary Care PBRN, visit:

<https://gpctr.unmc.edu/ctr-resources/pbrn/>

The content of this newsletter is solely the responsibility of the Great Plains IDeA-Clinical & Translational Research and does not necessarily represent the official views of UNMC.



@GPIDeACTR