



G R E A T P L A I N S
IDeA | Clinical and
Translational Research

GREAT PLAINS PRIMARY CARE PRACTICE-BASED RESEARCH NETWORK

NOVEMBER 2022 | VOLUME NO.10

Medical Student Summer Research Program Seeks PBRN Partners

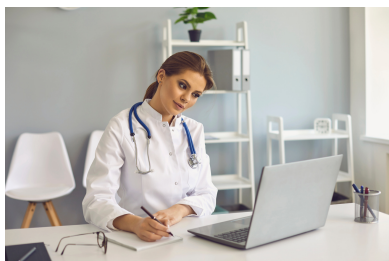
The University of Nebraska Medical Center's Great Plains IDeA-CTR is seeking clinicians from the Practice-Based Research Network to serve as sponsors for the Medical Student Summer Research Program. Clinicians will work with College of Medicine students to develop a research proposal that address a community need. Community needs identified by the Great Plains IDeA-CTR Community Advisory Board include, but are not limited to:

- Behavioral Health, defined as emotions and behaviors that affect your overall wellbeing
- Chronic disease and leading causes of death
- injury prevention and violence

Clinicians do not have to have prior research experience to serve as a sponsor. Chart reviews or case studies are excellent projects for novice researchers and students.

Students will be encouraged to submit an abstract to the Midwest Student Biomedical Research Forum at the conclusion of their summer research experience.

The purpose of the Medical Student Summer Research Program (MSSRP) is to provide College of Medicine Students an opportunity to enhance their research skills by seeking out information, analyzing data and applying a solution to a defined problem. The student will spend 8-10 weeks in the research endeavor.



To learn more about this
opportunity, please contact
Emily Frankel at
emily.frankel@unmc.edu.



Professional Development

The Great Plains Primary Care PBRN provides links to professional development opportunities, in the form of seminars and webinars, that enhance clinical expertise, reveal best care practices, promote clinical research, and deliver cutting-edge research findings. Continuing education credits are available for select in-person and distance participation. Additional professional development opportunities can be found on the PBRN education webpage [here](#).

Online Training Available: Community-Engaged Research Institute



The Great Plains IDEA-CTR Community Engagement and Outreach Core hosted the 2nd Annual Community-Engaged Research Institute this fall. The Institute is an intensive program providing training opportunities for scientists, community members, clinicians, and other stakeholders interested in community research. Topics included:

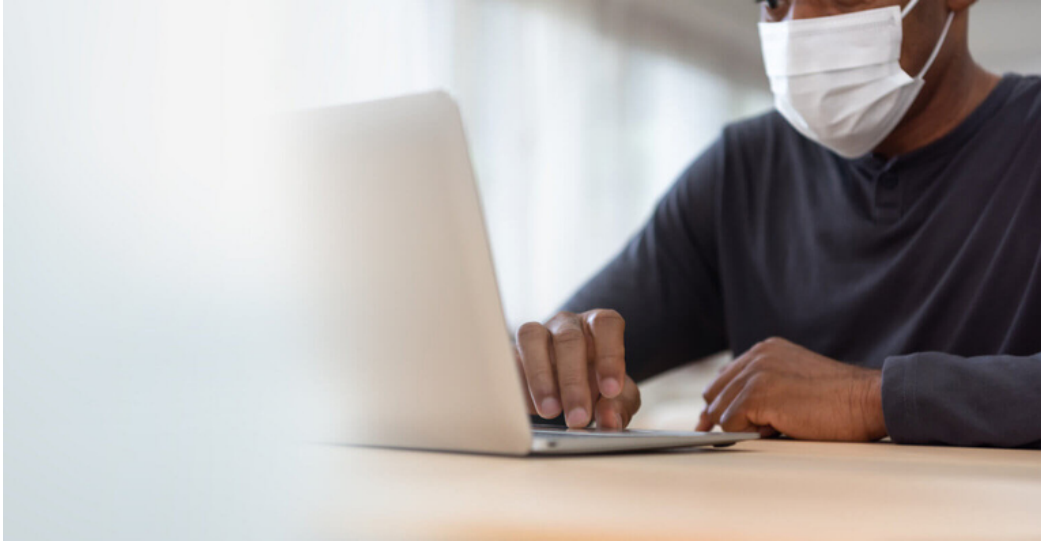
- Defining Community
- Formulating a Research Question
- Ways to Initiate and Sustain Partnerships
- Cultural Sensitivity, DEI, and Strategies for Recruitment
- Crafting a Biosketch for Community Partners
- And more!

Scan the QR code to access the recordings, handouts, and presentation slides.



Research

Learn about upcoming, ongoing, and completed research impacting the region. Please share these opportunities and findings with your patients and healthcare community. A complete list of ongoing research can be found on the PBRN Research webpage [here](#).



PBRN Supports Two RO1 Grant Submissions

We would like to thank the PBRN sites who wrote Letters of Support, a grant requirement, for two RO1 level grants. RO1 grants are the oldest grant mechanism issued by the National Institutes of Health, and typically support a research project for 3-5 years. If the grants are awarded, PBRN sites will be involved in cutting-edge research! These grant applications would not have been possible without the support of the PBRN!



Coleman Receives the Community Collaborator of the Year Award

Jason Coleman, PhD, was awarded the Community Collaborator of the Year Award at the 2022 Great Plains IDeA-CTR Annual Scientific Meeting. Dr. Coleman was recognized for his efforts conducting multiple community-engaged projects on HIV prevention and community needs assessments. With other community partners Dr. Coleman has supported the Women's Fund of Omaha, Douglas County Health Department, and UNMC Office of Health Disparities, providing support for Adolescent Health Programming, serving on advisory boards, and conducting community needs assessment for mental health.



Happy Holidays



Wishing you a warm and relaxing holiday
season!

Looking forward to 2023!

-The Great Plains PBRN Administration



The Great Plains IDeA-CTR is a collaborative effort between nine biomedical research institutes across the Great Plains. The project described is supported by the National Institute of General Medical Sciences, U54 GM115458, which funds the Great Plains IDeA-CTR Network. The content is solely the responsibility of the authors and does not necessarily represent the official views of the NIH.



To learn more about the Great Plains Primary Care PBRN, visit:

<https://gpctr.unmc.edu/ctr-resources/pbrn/>

The content of this newsletter is solely the responsibility of the Great Plains IDeA-Clinical & Translational Research and does not necessarily represent the official views of UNMC.



@GPIDeACTR